

Santa Cruz Island Target Species Field Guide



The Nature
Conservancy



Protecting nature. Preserving life.™

A special thank you to the Channel Islands National Park for contributing species information and photographs

If you encounter a target species, please collect the following information and report to:

John Knapp

jknapp@tnc.org or (805) 291-6168

Species name

Date

Time of wildlife sighting

Your name

GPS coordinates

If you do not have a GPS, you can take a photo that has recorded the coordinates as metadata, which most smart phones do. If your camera does not record GPS coordinates, record the following: general location description and specific location description, or you can send a Google Earth KMZ file with a pinpoint location.

Example:

Bigfoot/Sasquatch (*Homo Sapiens Hirtsutii*)

8/11/2014

3:30PM

John Knapp

No GPS

See attached photo and KMZ file

Prisoners Harbor- 100 feet west of first major canyon along the Pelican trail, see rock cairn on south-side of trail as location marker.

Santa Cruz Island Invasive Plant Eradication Species Field Guide



The Nature
Conservancy



Protecting nature. Preserving life.™

A special thank you to the Channel Islands National Park for contributing species information and photographs

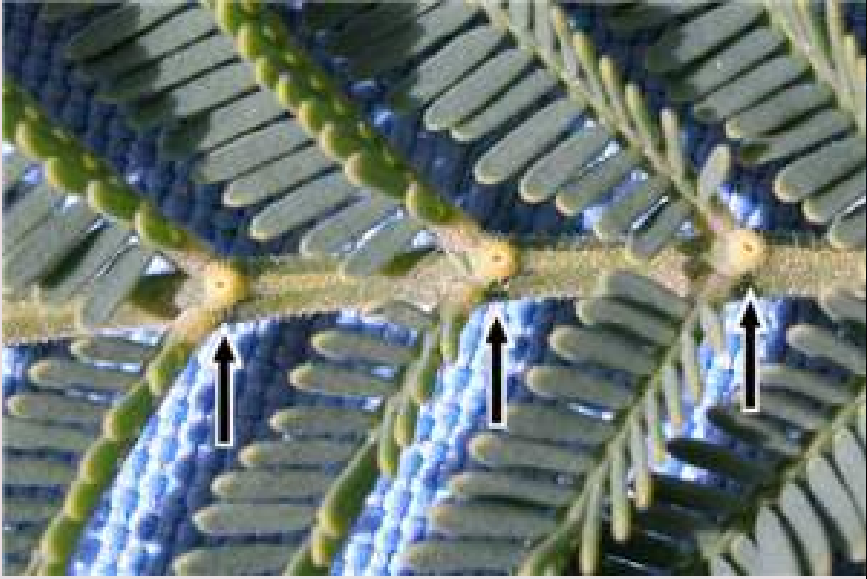
Species	Common Name		Species	Common Name		Species	Common Name
<i>Acacia dealbata</i>	Plume Acacia		<i>Cynara cardunculus</i>	Artichoke Thistle		<i>Oleas europaea</i>	Olive
<i>Acacia melanoxylon</i>	Black Acacia		<i>Delairea odorata</i>	Cape Ivy		<i>Opuntia ficus-indica</i>	Mission Cactus
<i>Araujia sericifera</i>	Bladderflower		<i>Ehrharta calycina</i>	Purple Veldtgrass		<i>Paraserianthes lophantha</i>	Plume Acacia
<i>Arundo donax</i>	Giant Reed		<i>Eriogonum giganteum</i>	Saint Catherine's Lace		<i>Pennisetum setaceum</i>	Crimson Fountain Grass
<i>Brassica tournefortii</i>	Saharan Mustard		<i>Euphorbia terracina</i>	Carnation Spurge		<i>Phalaris aquatica</i>	Harding Grass
<i>Cardaria draba</i>	Hoary Cress		<i>Ficus carica</i>	Fig Tree		<i>Pinus pinea</i>	Stone Pine
<i>Carduus pycnocephalus</i>	Italian Thistle		<i>Foeniculum vulgare</i>	Fennel		<i>Rubus armeniacus</i>	Himalayan Blackberry
<i>Centaurea solstitialis</i>	Yellow Starthistle		<i>Gaura drummondii</i>	Drummond's Beeblossom		<i>Schinus molle</i>	Peruvian Peppertree
<i>Centranthus ruber</i>	Jupiter's Beard		<i>Genista monspessulana</i>	French Broom		<i>Solanum elaeagnifolium</i>	Silver-leaf Nightshade
<i>Cichorium intybus</i>	Common Chicory		<i>Hedera spp.</i>	English Ivy and Algerian Ivy		<i>Spartium junceum</i>	Spanish Broom
<i>Conium maculatum</i>	Poison Hemlock		<i>Helichrysum petiolare</i>	Licorice Plant		<i>Tamarix ramosissima</i>	Saltcedar
<i>Cortaderia selloana</i>	Pampas Grass		<i>Nicotiana glauca</i>	Tree Tobacco		<i>Vinca major</i>	Big Periwinkle

Eradication Invasive Species

Taxa Targeted for Eradication

Do not collect invasive species plant parts. Take photographs only. If you come in contact with an invasive plant, take precautions to clean yourself of any plant parts or mud that may contain invasive seed.

Species	Common Name		Species	Common Name		Species	Common Name
<i>Acacia dealbata</i>	Plume Acacia		<i>Cynara cardunculus</i>	Artichoke Thistle		<i>Oleas europaea</i>	Olive
<i>Acacia melanoxylon</i>	Black Acacia		<i>Delairea odorata</i>	Cape Ivy		<i>Opuntia ficus-indica</i>	Mission Cactus
<i>Araujia sericifera</i>	Bladderflower		<i>Ehrharta calycina</i>	Purple Veldtgrass		<i>Paraserianthes lophantha</i>	Plume Acacia
<i>Arundo donax</i>	Giant Reed		<i>Eriogonum giganteum</i>	Saint Catherine's Lace		<i>Pennisetum setaceum</i>	Crimson Fountain Grass
<i>Brassica tournefortii</i>	Saharan Mustard		<i>Euphorbia terracina</i>	Carnation Spurge		<i>Phalaris aquatica</i>	Harding Grass
<i>Cardaria draba</i>	Hoary Cress		<i>Ficus carica</i>	Fig Tree		<i>Pinus pinea</i>	Stone Pine
<i>Carduus pycnocephalus</i>	Italian Thistle		<i>Foeniculum vulgare</i>	Fennel		<i>Rubus armeniacus</i>	Himalayan Blackberry
<i>Centaurea solstitialis</i>	Yellow Starthistle		<i>Gaura drummondii</i>	Drummond's Beeblossom		<i>Schinus molle</i>	Peruvian Peppertree
<i>Centranthus ruber</i>	Jupiter's Beard		<i>Genista monspessulana</i>	French Broom		<i>Solanum elaeagnifolium</i>	Silver-leaf Nightshade
<i>Cichorium intybus</i>	Common Chicory		<i>Hedera spp.</i>	English Ivy and Algerian Ivy		<i>Spartium junceum</i>	Spanish Broom
<i>Conium maculatum</i>	Poison Hemlock		<i>Helichrysum petiolare</i>	Licorice Plant		<i>Tamarix ramosissima</i>	Saltcedar
<i>Cortaderia selloana</i>	Pampas Grass		<i>Nicotiana glauca</i>	Tree Tobacco		<i>Vinca major</i>	Big Periwinkle



Plume Acacia

Acacia dealbata

Species Name: *Acacia dealbata*

Common Name: Plume Acacia

Family: Fabaceae (Leguminosae) – Legume Family

Form: Tree

Height: <30 m

Petals: 4-5

Sepals: 4-5

Flower Color: Pale yellow to cream





Black Acacia or Blackwood

Acacia

Acacia melanoxylon

Species Name: *Acacia melanoxylon*

Common Name: Black Acacia or Blackwood Acacia

Family: Fabaceae (Leguminosae) – Legume Family

Form: Tree

Height: <30 m

Petals: 4-5

Sepals : 4-5

Flower Color: Pale yellow, radial





Bladderflower

Araujia sericifera

Species Name: *Araujia sericifera*

Common Name: Bladderflower

Family: Apocynaceae – Dogbane Family

Form: Noxious perennial vine

Height: Stem: <12 m

Petals: Generally 5, corolla 2–3 cm, bell/funnel shaped

Sepals: Generally 5, large, leaf-like

Flower Color: White





Giant Reed

Arundo donax

Species Name: *Arundo donax*

Common Name: Giant Reed

Family: Poaceae (Gramineae) – Grass Family

Form: Perennial grass

Height: Stem: 2-10 m

Petals: Spikelet: 10–14 mm

Sepals: Glumes 10–13 mm

Flower Color: Silver/brown/purple





Saharan Mustard or
African Mustard
Brassica tournefortii

Species Name: *Brassica tournefortii*

Common Name: Saharan Mustard, African Mustard

Family: Brassicaceae (Cruciferae) – Mustard Family

Form: Winter annual herb

Height: Stem: 3-7 dm

Petals: 4, 4–7 mm

Sepals: 4, 2.5–4.5 mm

Flower Color: Generally yellow





Hoary Cress

Cardaria draba

Species Name: *Cardaria draba*

Common Name: Hoary Cress

Family: Brassicaceae (Cruciferae) – Mustard Family

Form: Perennial herb

Height: Stem: 2-6.5 dm

Petals: 4, 3-4 mm

Sepals: 4, 1.5–2.5 mm

Flower Color: White





Italian Thistle
Carduus pycnocephalus

Species Name: *Carduus pycnocephalus*

Common Name: Italian Thistle

Family: Asteraceae (Compositae) – Sunflower Family

Form: Winter annual forb

Height: Stem: 2-10 dm

Petals: Corolla: 10–14 mm

Sepals:

Tepals:

Flower Color: Pink to purple

Note: Tube long, slender: 5-8 mm,
throat abruptly expanded,
short: 2-3 mm, lobes linear: 4-5 mm





Yellow Starthistle

Centaurea solstitialis

Species Name: *Centaurea solstitialis*

Common Name: Yellow Starthistle

Family: Asteraceae (Compositae) – Sunflower Family

Form: Bushy winter annual

Height: 1-10 dm

Petals: Disk flower, corolla: 13–20 mm

Flower Color: Yellow

Note: Stems are bluish green in color and have “wings” running their length





Jupiter's Beard or
Red Valerian
Centranthus ruber

Species Name: *Centranthus ruber*

Common Name: Jupiter's Beard, Red Valerian

Family: Valerianaceae – Valerian Family

Form: Annual, perennial herb

Height: Stem: 3-9 dm

Petals: Corolla: 14–18 mm, funnel shaped

Sepals: Calyx: lobes 5–15, coiled inward

Flower Color: Generally purple-red,
occasionally lavender or white





Common Chicory

Cichorium intybus

Species Name: *Cichorium intybus*

Common Name: Common Chicory

Family: Asteraceae (Compositae) – Sunflower Family

Form: Perennial herb

Height: When flowering stem is 30-100 cm

Petals: Flower heads are 2-4 cm wide

Flower Color: Usually bright blue,
rarely white or pink, anthers usually
dark blue





Poison Hemlock

Conium maculatum

Species Name: *Conium maculatum*

Common Name: Poison Hemlock

Family: Apiaceae (Umbelliferae) – Carrot Family

Form: Biennial

Height: 5-30 dm

Petals: 5, wide with narrowed tips

Flower Color: White





Pampas Grass

Cortaderia selloana

Species Name: *Cortaderia selloana*

Common Name: Pampas Grass

Family: Poaceae (Gramineae) – Grass Family

Form: Large perennial grass

Height: Stem 2-4 m

Petals: Spikelet: 15–17 mm, laterally compressed;
florets 4–8

Flower Color: Silky hairs
(yellow/white)





Artichoke Thistle

Cynara cardunculus

Species Name: *Cynara cardunculus*

Common Name: Artichoke Thistle

Family: Asteraceae (Compositae) – Sunflower Family

Form: Perennial thistle

Height: 5-25 dm

Petals: Corolla: 3–5 cm

Flower Color: Blue or purple

Note: Tube very slender, throat widened abruptly, lobes linear





Cape Ivy or German Ivy
Delairea odorata

Species Name: *Delairea odorata*

Common Name: Cape Ivy, German Ivy

Family: Asteraceae (Compositae) – Sunflower Family

Form: Perennial vine

Height: Stem 1-6 m

Petals: Disk flower: 8–45, corolla: narrowly bell- to funnel-shaped

Flower Color: Bright yellow





Purple Veldtgrass

Ehrharta calycina

Species Name: *Ehrharta calycina*

Common Name: Purple Veldtgrass

Family: Poaceae (Gramineae) – Grass Family

Form: Perennial grass

Height: Stem: 30-75 cm

Petals: Spikelet: 4–8 mm

Flower Color: Purple





Saint Catherine's Lace

Eriogonum giganteum

Species Name: *Eriogonum giganteum*

Common Name: Saint Catherine's Lace

Family: Polygonaceae – Buckwheat Family

Form: Shrub

Height: 3-20 dm

Petals: Flower: 2–4 mm

Flower Color: White to rose

Note: Hybridizes with native

E. arborescens to form *E. xblissiana*





Carnation Spurge

Euphorbia terracina

Species Name: *Euphorbia terracina*

Common Name: Carnation Spurge

Family: Euphorbiaceae – Spurge Family

Form: Perennial or biennial herb

Height: Stem: 3-8 dm

Flower Color:

Note: 10–15 staminate flowers in clusters around pistillate flowers





Fig Tree

Ficus carica

Species Name: *Ficus carica*

Common Name: Fig Tree

Family: Moraceae – Mulberry Family

Form: Tree

Height: <10 m

Petals: flowers internal, enclosed in an obovoid inflorescence receptacle with a small, scaly opening

Flower Color:

Note: Contact with fig leaves and sap can cause adverse skin irritation





Fennel
Foeniculum vulgare

Species Name: *Foeniculum vulgare*

Common Name: Fennel

Family: Apiaceae (Umbelliferae) – Carrot Family

Form: Erect perennial herb

Height: 0.9–2 m

Petals: 5, wide, tips narrowed

Flower Color: Yellow





Drummond's Beeblossom or
Scented Gaura
Gaura drummondii

Species Name: *Gaura drummondii*

Common Name: Drummond's Beeblossum,
Scented Gaura

Family: Onagraceae - Evening Primrose family

Form: Perennial herb growing from rhizomes

Height: Stem: 10-12 cm

Petals: 4, 6–10 mm, small, spoon-shaped

Sepals: 4, 7–14 mm

Flower Color: White, fading to
pink





French Broom

Genista monspessulana

Species Name: *Genista monspessulana*

Common Name: French Broom

Family: Fabaceae (Leguminosae) – Legume Family

Form: Perennial shrub

Height: <3 m

Petals: 5

Sepals: Calyx: 5–7 mm

Flower Color: Yellow





English Ivy and Algerian Ivy
Hedera spp.

Species Name: *Hedera helix* and *Hedera canariensis*

Name: English Ivy and Algerian Ivy

Family: Araliaceae – Ginseng Family

Form: Woody vine

Height: Flowering stems < 15 cm

Petals: 5

Sepals: 5

Flower Color: White to green





Licorice Plant
Helichrysum petiolare

Species Name: *Helichrysum petiolare*

Common Name: Licorice Plant

Family: Asteraceae (Compositae) – Sunflower Family

Form: Shrub

Height: Stem: $\leq 100+$ cm

Petals: Corolla: 2.5 mm

Flower Color: Creamy white,
dark brown in age





Tree Tobacco

Nicotiana glauca

Species Name: *Nicotiana glauca*

Common Name: Tree Tobacco

Family: Solanaceae – Nightshade Family

Form: Small tree or shrub

Height: 3-6 m

Petals: Corolla: 30–35 mm, cylindric

Sepals: Calyx: \pm 10 mm, 5 lobed

Flower Color: Yellow





Olive
Olea europaea

Species Name: *Olea europaea*

Common Name: Olive

Family: Oleaceae – Olive Family

Form: Tree

Height: <10 m

Petals: 4, corolla: 2.5–4 mm

Sepals: Calyx: cup-like, 4-toothed, \pm 1 mm

Flower Color: White, yellow anthers





Mission Cactus
Opuntia ficus-indica

Species Name: *Opuntia ficus-indica*

Common Name: Mission Cactus

Family: Cactaceae – Cactus Family

Form: Tree-like cactus, fleshy

Height: Stem: 4-5 m, segments: 25–43 cm

Petals: Spines: 6 per areole, \pm 1–3 cm, beige/gray-brown

Flower Color: Inner perianth: yellow
orange

Note: Hybridizes with native *Opuntia*
species: *O. oricula* and *O. littoralis*





Plume Acacia
Paraserianthes lophantha

Species Name: *Paraserianthes lophantha*

Common Name: Plume Acacia

Family: Fabaceae (Leguminosae) – Legume Family

Form: Shrub to medium sized tree

Height: 2-8 m, occasionally up to 10 m

Petals: 5, corolla: 5–7.2 mm

Sepals: 5

Flower Color: Green





Crimson Fountain Grass

Pennisetum setaceum

Species Name: *Pennisetum setaceum*

Common Name: Crimson Fountain Grass

Family: Poaceae (Gramineae) – Grass Family

Form: Perennial grass

Height: Stem: 4–15 dm

Petals: Spikelet: 4.5–7 mm, in clusters of 1-4 on highly reduced branches

Flower Color: Pink to dark red





Harding Grass

Phalaris aquatica

Species Name: *Phalaris aquatica*

Common Name: Harding Grass

Family: Poaceae (Gramineae) – Grass Family

Form: Perennial grass

Height: Stem: 4–20 dm

Petals: Spikelet: glumes: 4–5 mm

Flower Color: Silky, hairy

Note: Inflorescence: cylindric to ovate, often lobed below, occasionally interrupted





Stone Pine

Pinus pinea

Species Name: *Pinus pinea*

Common Name: Stone Pine

Family: Pinaceae – Pine Family

Form: Tree

Height: 12-25 m

Flower Color:





California Blackberry



Himalayan Blackberry



Himalayan Blackberry

Rubus armeniacus

Species Name: *Rubus armeniacus*

Common Name: Himalayan Blackberry

Family: Rosaceae – Rose Family

Form: Shrub

Height: <3 m

Petals: 5, 10–15 mm

Sepals: 5

Flower Color: White to pink





Peruvian Peppertree

Schinus molle

Species Name: *Schinus molle*

Common Name: Peruvian Peppertree

Family: Anacardiaceae – Sumac or Cashew Family

Form: Evergreen shrub or tree

Height: 5-18 m

Petals: 5, flower: < 3 mm

Sepals: 5

Flower Color: White to yellow





Silver-leaf Nightshade

Solanum elaeagnifolium

Species Name: *Solanum elaeagnifolium*

Common Name: Silver-leaf Nightshade

Family: Solanaceae – Nightshade Family

Form: Herb

Height: Up to 60 cm

Petals: 5, corolla: 2-3 cm, rotate

Sepals: Calyx 5–8 mm, bell-shaped

Flower Color: Blue, violet, or sometimes white

Note: Stems usually have slender, 2-5 mm long, red or yellow spines which also sometimes occur on the veins of the leaves





Spanish Broom

Spartium junceum

Species Name: *Spartium junceum*

Common Name: Spanish Broom

Family: Fabaceae (Leguminosae) – Legume Family

Form: Deciduous shrub

Height: Stem: <3 m

Petals: 5, flower: 2–3 cm

Sepals: 5, calyx: split adaxially to base

Flower Color: Yellow





Saltcedar or Tamarisk

Tamarix ramosissima

Species Name: *Tamarix ramosissima*

Common Name: Saltcedar, Tamarisk

Family: Tamaricaceae – Tamarisk Family

Form: Shrub or tree

Height: <8 m

Petals: 5, 1.5–2 mm, obovate to elliptic

Sepals: 5, 0.5–1 mm, ovate

Flower Color: White, pink, red





Big Periwinkle

Vinca major

Species Name: *Vinca major*

Common Name: Big Periwinkle

Family: Apocynaceae – Dogbane Family

Form: Perennial vine or ground cover

Height:

Petals: 5, corolla: 3–5 cm, tube funnel shaped

Sepals: 5, calyx: lobes long

Flower Color: Purple-blue (white)



**If you encounter a target species, please collect the following information and report to
John Knapp
jknapp@tnc.org or (805) 291-6168**

Species name

Date

Time of wildlife

Your name

GPS coordinates

If you do not have a GPS, you can take a photo that has recorded the coordinates as metadata, which most smart phones do. If your camera does not record GPS coordinates, record the following: general location description and specific location description, or you can send a Google Earth KMZ file with a pinpoint location.

Example:

Bigfoot/Sasquatch (*Homo Sapiens Hirtsutii*)

8/11/2014

3:30PM

John Knapp

No GPS

See attached photo and KMZ file

Prisoners Harbor- 100 feet west of first major canyon along the Pelican trail, see rock cairn on south-side of trail.